

MINERAL ARTISTS SHOW

Four Mineral Art Masters.
Two Amazing Mineral Events.
One Special Tucson.

Fine Minerals International in association with BlueCap Productions is thrilled to announce that four of today's most **respected** and popular mineral artists – Eberhard Equit, Hildegard Könighofer, Wendell E. Wilson and Susan M. Robinson – will be the focus of some **special** programs at both the TGMS' Tucson Gem and Mineral Show™ and the Westward Look Mineral Show in February of 2010.

This is the first time in the history of Tucson that Gem and Mineral Art will take **center stage** – making February in Tucson an unprecedented opportunity to meet these widely praised and published artists, see their **amazing** work and learn more about how they create such **brehtaking** images. Eberhard Equit will also be signing, his new DVD, *Eberhard Equit – An Intimate Talk*.

FINE MINERALS
INTERNATIONAL



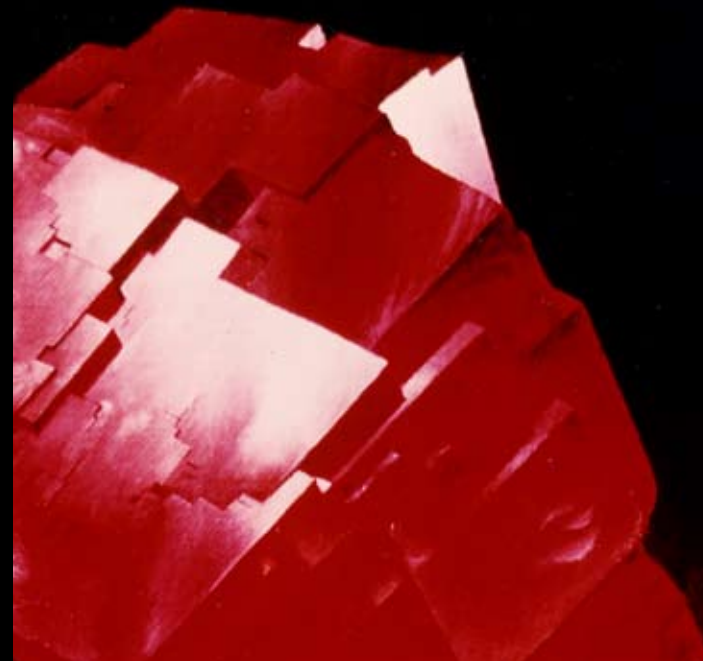
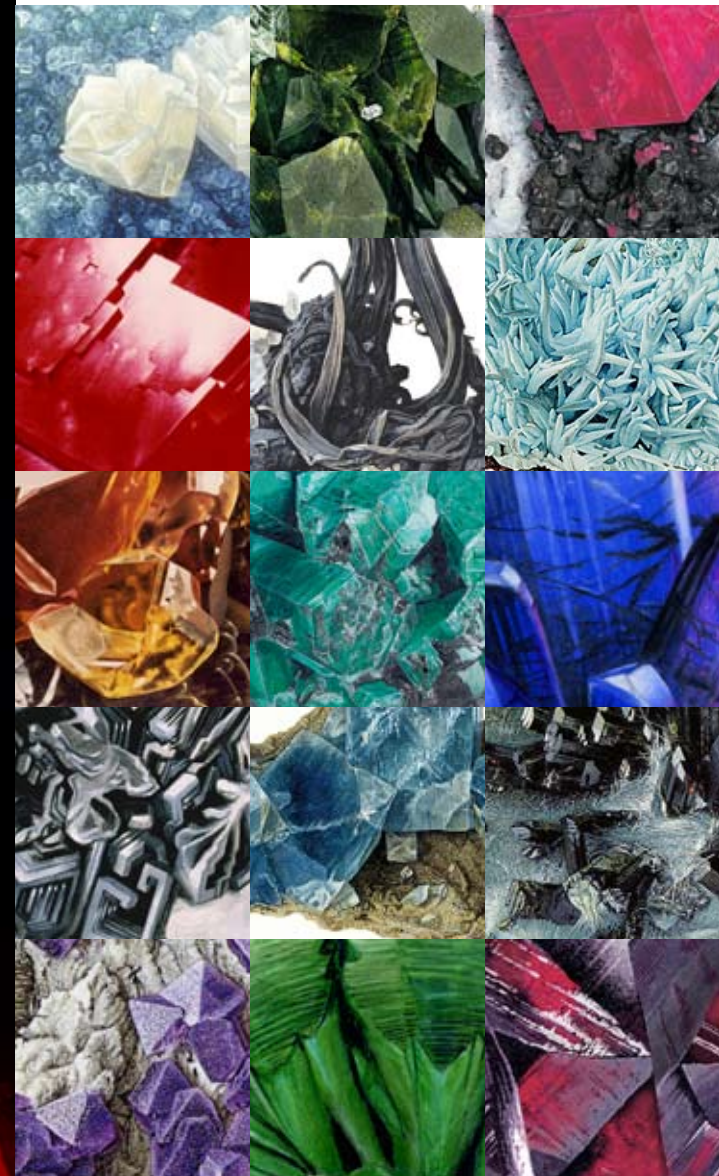
TUCSON GEM & MINERAL SHOW™



For more information and the latest updates on this event, please visit our website at:

www.bluecapproductions.com/mineralartists

FEATURING
EBERHARD EQUIT
HILDEGARD KÖNIGHOFER
WENDELL E. WILSON
SUSAN M. ROBINSON



EBERHARD EQUIT

Eberhard Equit has published two “must have” books for the gem and mineral collector and is now working on a third. The works featured in these, now hard-to-find, volumes are prominent in a number of the world’s most renowned collections. Many have said of Equit’s paintings that they noticed new detail in specimens they had owned for years in Equit’s astonishingly detailed and lifelike work – now is your chance to see for yourself!

HILDEGARD KÖNIGHOFFER

Hildegard Könighofer creates her gem and mineral specimen portraits using a combination of watercolor and colored pencils. She always paints specimens at actual size, and paints from the actual specimens without using reference photography. Her work is featured in a number of prominent collections.

WENDELL E. WILSON

As both a Geology and Fine Arts Major at the University of Minnesota, Wendell E. Wilson brings a unique blend of scientific knowledge and artistic training and experience to his amazingly detailed work, which often includes dramatic lighting effects. Working exclusively in oils, this difficult medium gives Wilson’s work an impressive richness and density and adds depth to his unique mastery of light. He is also the publisher of the Mineralogical Record.

SUSAN M. ROBINSON

A pioneer in gem and mineral art, Susan M. Robinson paints in a rigorously realistic style in acrylic paint on canvas and on art board and also creates drawings in pen and ink. She has been featured at a number of galleries, shows and museums, as well as published articles and magazine covers.

MANY OTHER ARTISTS TO BE ANNOUNCED...

WESTWARD LOOK SHOW

Eberhard Equit, Hildegard Könighofer and Susan M. Robinson will form the panel for 2010’s Sunday Evening Event with Mineralogical Record’s Wendell E. Wilson acting as the moderator.

During the Social Hour preceding the panel you will also have an opportunity to view work by other select gem and mineral artists in a gallery setting. Then, take in the panel discussion and multimedia show, certain to be a historic event in the growth of this artistic field. Indeed, some have compared gem and mineral art to botanicals, an art form that has been highly regarded and sought after for centuries.

Sunday Evening Event:

February 7, 2010
Social Hour - 6:30 p.m.
Panel Presentation - 7:30 p.m.
Sonoran Ballroom



TGMS SHOW

For the first time in its 57-year history, gem and mineral art will be one of the main events at the TGMS show. Eberhard Equit, Hildegard Könighofer, Wendell E. Wilson and Susan M. Robinson will not only display some of their most impressive work next to the stunning gems and minerals that inspired them, but will also spend a lot of time at the show so you will be able to meet them in person to discuss their work. Special cases and lighting have also been arranged to present both specimens and art on the main floor of the Tucson Convention Center for the entire show - a prominence gem and mineral art has never before enjoyed. This show marks an historic turning point in the growth of gem and mineral art and art collecting. Make sure “you were there!”

Show Dates and Hours:

February 11-13, 2010
10:00 a.m. - 6:00 p.m.
February 14, 2010
10:00 a.m. - 5:00 p.m.
Tucson Convention Center

